



CoreLine Wall-mounted

WL140V LED20S/840 WIA ELB3 WH

CoreLine Wall-mounted, 25 W, D390 mm, 2200 lm, 4000 K, Wireless, Interact Ready, IP65, ELB3h

CoreLine Wall-mounted is a circular-shaped surface-mounted luminaire that is easy to apply in circulation areas such as hallways and staircases. The modern unobtrusive design, in combination with its homogeneous light distribution it delivers, ensures that this luminaire blends into most building architectures. With the push-in connectors, installation is fast and straightforward

Product data

General Information	
Light source replaceable	No
Number of gear units	Unit
Driver included	Yes
Product family code	WL140V [Coreline Gen3 Wall Luminaire]
Connectivity	Interact Ready
Lighting Technology	LED
Type of emergency lighting battery	Lithium
Value ladder	Performance
CE mark	Yes
Warranty period	5 years
Flammability mark	-
ENEC mark	-
Glow-wire test	Temperature 850 °C, duration 30 s
EU RoHS compliant	Yes

Light Technical	
Luminous Flux	2,200 lm
Saturated Red (R9)	<50
Correlated Colour Temperature	4000 K
Luminous efficacy (rated) (nom.)	88 lm/W
Colour rendering index (CRI)	>80
Flickering value (PstLM)	1
Stroboscopic effect	1.6
Beam angle of light source	120 degree(s)
Light source colour	840 neutral white
Optic type	Symmetrical
Luminaire light beam spread	120° x 120°
Unified Glare Rating (CEN)	24

Operating and Electrical	
Input Voltage	220-240 V

CoreLine Wall-mounted

Line Frequency	50 or 60 Hz
Initial CLO power consumption	- W
Average CLO power consumption	- W
Inrush current	4.9 A
Inrush time	0.0057 ms
Power Consumption	25 W
Power Factor (Fraction)	0.9
Connection	Push-in connector 6-pole
Cable	-
Number of products on MCB of 16 A type B	24

Temperature

Ambient temperature range	0 to +25 °C
---------------------------	-------------

Controls and Dimming

Dimmable	Yes
Driver/power unit/transformer	Wireless driver Interact System-ready
Control interface	Wireless
Constant light output	No

Mechanical and Housing

Housing material	Polycarbonate
Reflector material	Polycarbonate
Optic material	Polycarbonate
Optical cover/lens material	Polycarbonate
Fixation material	-
Housing Colour	White
Optical cover/lens finish	Opal
Overall height	85 mm
Overall diameter	390 mm

Emergency Operation

Emergency flux	350 lm
Emergency Power	3 W

Approval and Application

Ingress protection code	IP65 [Dust penetration-protected, jet-proof]
-------------------------	--

Mech. impact protection code	IK10 [20 J vandal-resistant]
Sustainability rating	-
Protection class IEC	Safety class II
Photobiological risk	Photobiological risk group 0 @200mm to EN62778
Photobiological risk specification	0.2 m

Initial Performance (IEC Compliant)

Luminous flux tolerance	+/-10%
Initial chromaticity	(0.3818,0.3797) SDCM <3
Power consumption tolerance	+/-10%

Over Time Performance (IEC Compliant)

Control gear failure rate at median useful life	5 %
50,000 h	
Lumen maintenance at median useful life*	80
50,000 h	

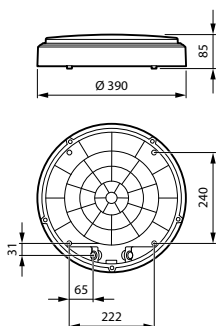
Application Conditions

Performance ambient temperature Tq	25 °C
Maximum dim level	1%
Suitable for random switching	No

Product Data

Order product name	WL140V LED20S/840 WIA ELB3 WH
Full product name	WL140V LED20S/840 WIA ELB3 WH
Full EOC	871869997877800
Order code	97877800
Material no. (12 NC)	910505101563
SAP numerator – quantity per pack	1
EAN/UPC – Product/Case	8718699978778
Numerator – packs per outer box	1
EAN/UPC - Case	8718699978778

Dimensional drawing



CoreLine Wall-mounted

