



CorePro LED PLL



CorePro LED Urban PLL Mains 18W 830

Philips CorePro LED PLL is the ideal uplamping solution for downlights & luminaires in a wide range of general lighting applications. It integrates a LED light source into a traditional fluorescent form factor to offer superb energy savings over a lifetime that's twice as long as fluorescent alternatives.

Product data

General Information	
Cap base	2G11
Nominal lifetime	30,000 h
Switching Cycle	200,000
Lighting Technology	LED
Flux measurement reference	Sphere

Light Technical	
Colour Code	830 [CCT of 3000K]
Beam angle (nom.)	360 degree(s)
Luminous Flux	2,100 lm
Luminous efficacy (rated) (nom.)	116 lm/W
Colour designation	White (WH)
Correlated Colour Temperature	3000 K
Colour consistency	<6
Colour rendering index (CRI)	80
LLMF at end of nominal lifetime (nom.)	70 %
Flickering value (PstLM)	1
Stroboscopic effect	0.4
Photobiological safety according to EN 62471	RG0

Operating and Electrical	
Input frequency	50 to 60 Hz

Power Consumption	18 W
Lamp current (nom.)	100 mA
Starting time (nom.)	0.5 s
Warm-up time to 60% light	0.5 s
Power Factor (Fraction)	0.9
Voltage (nom.)	220-240 V
LED alternative to fluorescent lamp power	36 W
Inrush current at mains	4.3
Max. lamp no. on MCB B type 10A – Mains	100
Max. lamp no. on MCB B type 10A – EM ballast without Compensation Capacitor.	-
Max. lamp no. on MCB B type 10A – EM ballast with Compensation Capacitor.	-
Max. lamp no. on MCB B type 16A – Mains	160
Max. lamp no. on MCB B type 16A – EM ballast without Compensation Capacitor.	-
Max. lamp no. on MCB B type 16A – EM ballast with Compensation Capacitor.	-
Ballast Compatibility	Mains

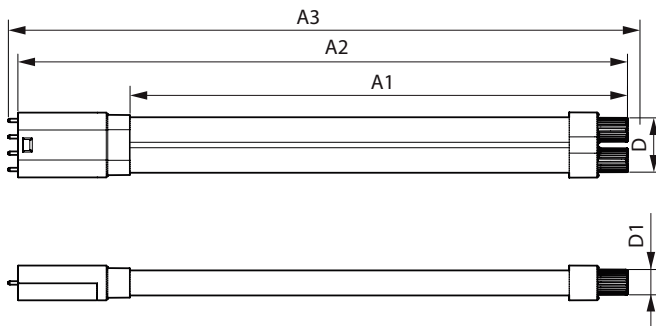
Temperature	
Ambient temperature range	-30 to +45 °C

CorePro LED PLL

T-Case maximum (nom.)	55 °C
Controls and Dimming	
Dimmable	No
Mechanical and Housing	
Lamp Finish	Clear
Bulb material	Plastic
Product length	400 mm
Bulb shape	PL-L
Approval and Application	
Energy Efficiency Class	E
Energy-saving product	Yes
Approval marks	RoHS compliance CE marking KEMA Keur certificate
Energy consumption kWh/1,000 hours	18 kWh
EPREL registration number	1826744

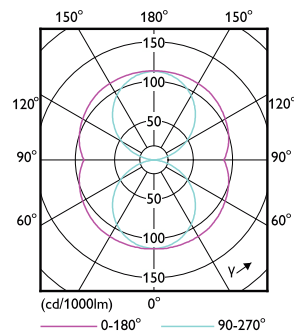
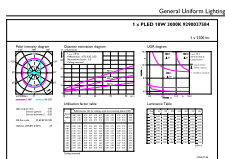
CE mark	Yes
EU RoHS compliant	Yes
Product Data	
Order product name	CorePro LED Urban PLL Mains 18W 830
Full product name	CorePro LED Urban PLL Mains 18W 830
Full EOC	872016928720400
Order code	28720400
Material no. (12 NC)	929003758402
SAP numerator – quantity per pack	1
Net Weight (Piece)	0.150 kg
EAN/UPC – Product/Case	8720169287204
Numerator – packs per outer box	10
EAN/UPC - Case	8720169287211

Dimensional drawing



Product	D1	D	A1	A2	A3
CorePro LED Urban PLL Mains 18W 830	17 mm	37 mm	335 mm	410 mm	416 mm

Photometric data

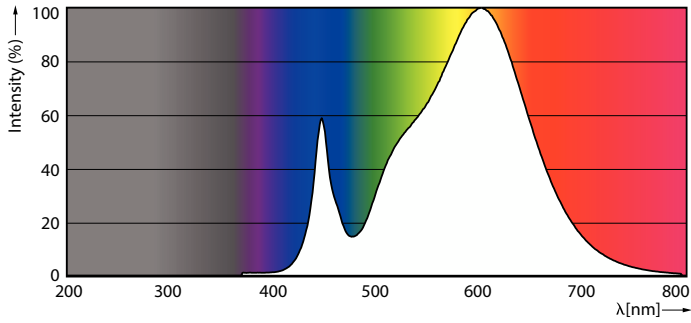


General uniform lighting - CorePro LED Urban PLL Mains 18W 830

Light Distribution Diagram - CorePro LED Urban PLL Mains 18W 830

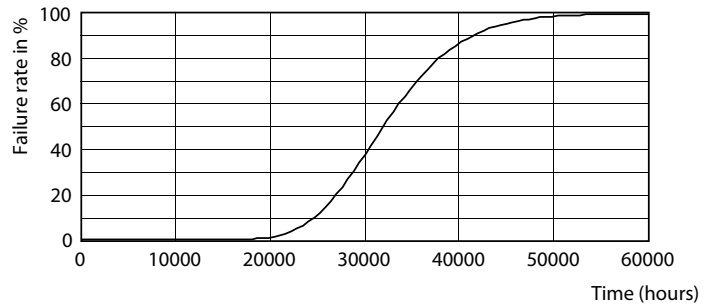
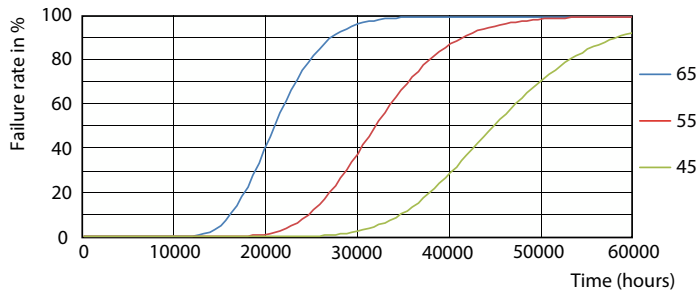
CorePro LED PLL

Photometric data



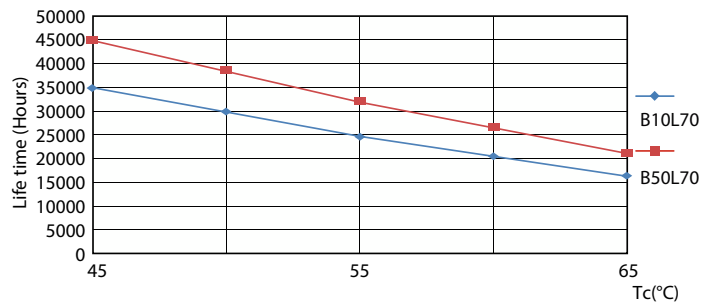
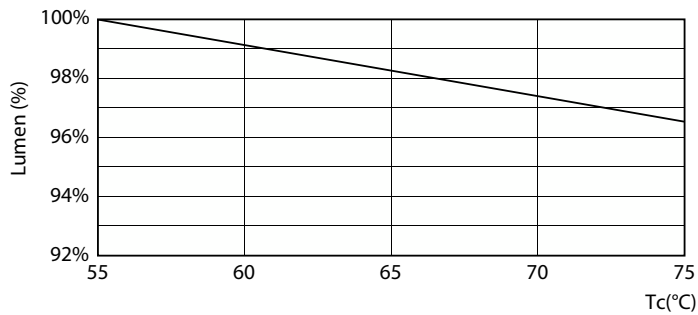
Spectral Power Distribution Colour - CorePro LED Urban PLL Mains 18W 830

Lifetime



FailureRate

Life Expectancy Diagram

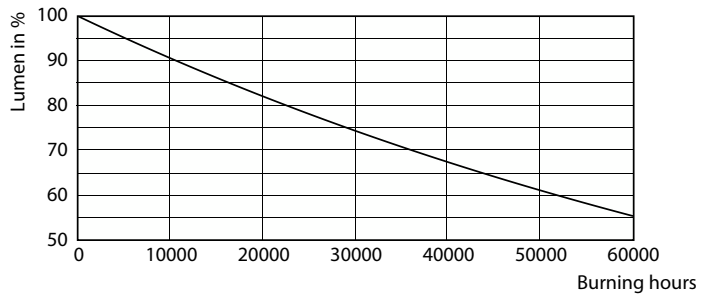


Lumen Maintenance Diagram - CorePro LED Urban PLL Mains 18W 830

LifetimeVsTc

CorePro LED PLL

Lifetime



Lumen Maintenance Diagram - CorePro LED Urban PLL Mains 18W 830

