

Product Information Sheet

COMMISSION DELEGATED REGULATION (EU) 2019/2015 with regard to energy labelling of light sources

Supplier's name or trade mark: Noxion B.V.

Supplier's address: Noxion B.V., Schootense Dreef 27, 5708 HZ Helmond, NL

Model identifier: 8719157051972

Type of light source:

Lighting technology used:	LED	Non-directional or directional:	DLS
Light source cap-type (or other electric interface)	GU4		
Mains or non-mains:	NMLS	Connected light source (CLS):	No
Colour-tuneable light source:	No	Envelope:	-
High luminance light source:	No		
Anti-glare shield:	No	Dimmable:	Yes

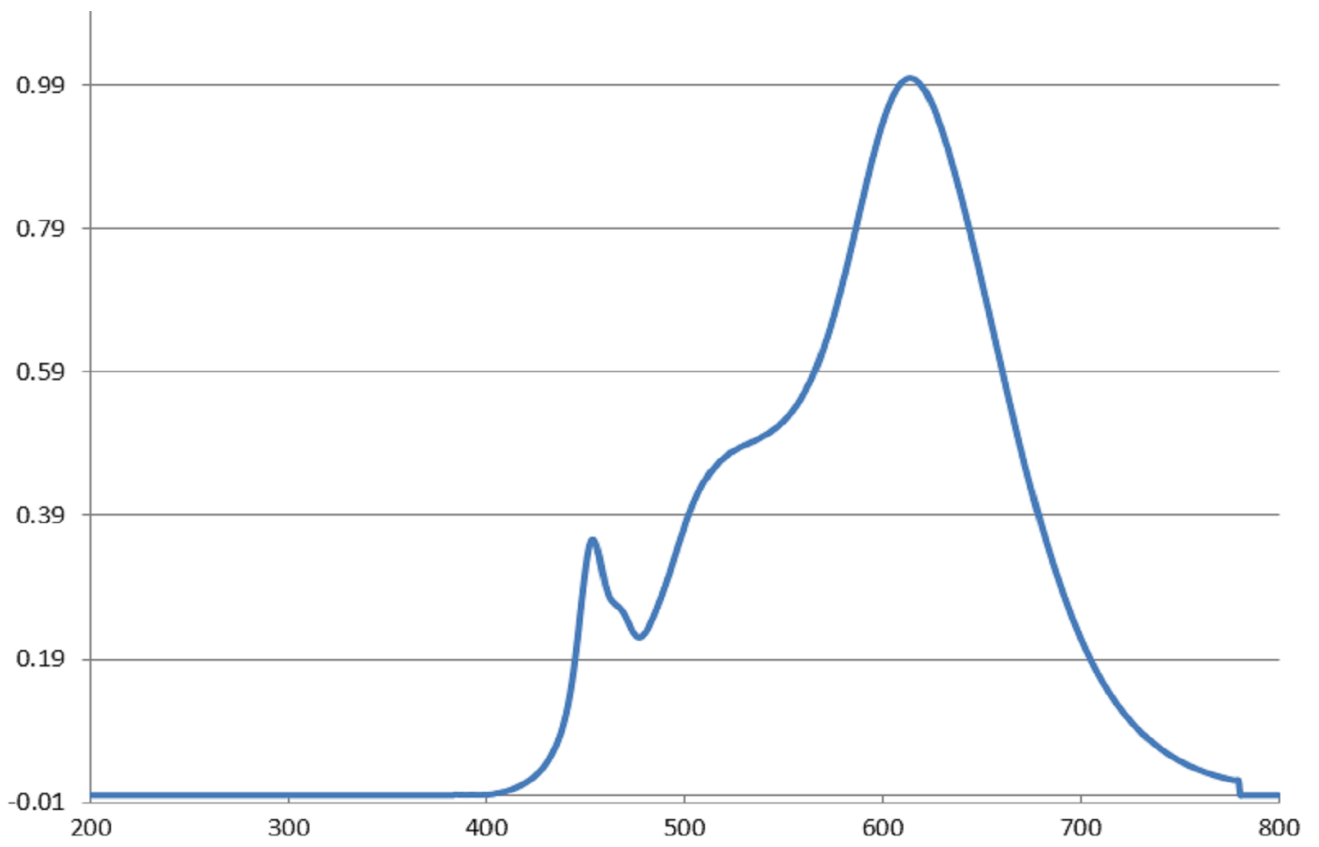
Product parameters

Parameter	Value	Parameter	Value
General product parameters:			
Energy consumption in on-mode (kWh/1000 h), rounded up to the nearest integer	3	Energy efficiency class	G
Useful luminous flux (ϕ_{use}), indicating if it refers to the flux in a sphere (360°), in a wide cone (120°) or in a narrow cone (90°)	184 in Narrow cone (90°)	Correlated colour temperature, rounded to the nearest 100 K, or the range of correlated colour temperatures, rounded to the nearest 100 K, that can be set	2 700
On-mode power (P_{on}), expressed in W	2,8	Standby power (P_{sb}), expressed in W and rounded to the second decimal	-
Networked standby power (P_{net}) for CLS, expressed in W and rounded to the second decimal	-	Colour rendering index, rounded to the nearest integer, or the range of CRI-values that can be set	90
Outer dimensions without separate control gear, lighting control	Height	38	Spectral power distribution in the range 250 nm to 800 nm, at full-load
	Width	35	
	Depth	35	
			See image in last page

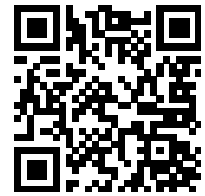
parts and non-lighting control parts, if any (millimetre)			
Claim of equivalent power ^(a)	Yes	If yes, equivalent power (W)	20
		Chromaticity coordinates (x and y)	0,458 0,410
Parameters for directional light sources:			
Peak luminous intensity (cd)	350	Beam angle in degrees, or the range of beam angles that can be set	36
Parameters for LED and OLED light sources:			
R9 colour rendering index value	1	Survival factor	0,90
the lumen maintenance factor	0,95		

(a) : not applicable;

(b) : not applicable;



Model placed on the Union market from 16/09/2024



EPREL registration number: 2098857

<https://eprel.ec.europa.eu/qr/2098857>

Supplier: PICPAC B.V. (Manufacturer)

Website: www.picpac.nl

Customer care service:

Name: Noxion B.V.

Website: <https://www.noxion.com/nl/>

Email: info@noxion.com

Phone: 085 – 303 29 82

Address:

Schootense Dreef 27
5708 HZ Helmond
Netherlands