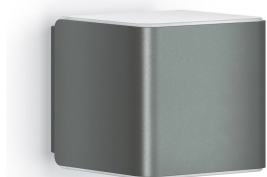


Specifications Steinel LED L 840 iHF Anthracite 9.5W 360lm - 830 Warm White | IP44 - Motion and Light Sensor



[View Product](#)

General Information

SKU	239548
EAN	4007841055530
Brand	Steinel
Manufacturer Name	Steinel Sensor Outdoor Lamp L 840 LED iHF anthracite
Average Lifetime (h)	50000

Technical Information

Technology	LED Integrated
Voltage (V)	220-240
Dimmable	Not Dimmable
Colour Code	830 Warm White
Colour temperature (Kelvin)	3000 Warm White
Colour Rendering (Ra)	80-89
Colour of Light	White
Light colour options	Single Color
Luminous Efficacy (lm/W)	38
Tiltable	No
Mounting Method	Wall mounted
Product Type Category	LED Decorative Lighting

Fixture Information

IP-rating	IP44
Impact Protection (IK)	IK03 - 0.35 joule
Operating Temperature	-20 to +40
Colour of the Fixture	Anthracite
Housing	PC (Polycarbonate)
Colour of material	Anthracite

Dimensions

Length (mm)	134
Width (mm)	110

Sensor Information

Type of sensor	Motion Sensor
----------------	---------------

Why Any-lamp?

 Order from the **largest lighting specialist** in Europe  **Customised** quotation

 **Up to 7 years warranty**  **Easy** return process